



Alumni Updates



► **A picture perfect Family Camp** It was a perfect summer weekend for alumni and their families

participating in our 6th annual Family Camp. This year's event, which sold out in early summer, was another great success. Take a look at our [photo album!](#)



► **It's almost time** Get your tickets now for our annual [Pride in URI Night](#) at Pawtucket's McCoy Stadium on

August 16. Gates open at 5 p.m. for an all-you-can-eat barbecue, followed by the PawSox vs. Scranton Red Barons game at 7:05 p.m. Be there!



► **Annual giving numbers going up** The Fund for URI, formerly called the [Annual Fund](#), raised \$1.25 million for

the 2005-2006 fiscal year, a 6 percent increase over last year. The average gift rose to \$135, a 13 percent boost over the previous amount. **Thanks** for ensuring an extraordinary education for today's students. Your generosity makes a difference!



► **Cheer on the Rams** Join us on **August 31** to cheer on the URI Rams as

they take on the UCONN Huskies at Rentschler Field in East Hartford. Before the game, join Rhody the Ram, your fellow URI alumni, family, and friends under the tent in the Rhody tailgate area. [Don't miss it!](#)

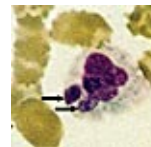
► **At the chapters** On **August 29,**

University News & Events



► **College of Pharmacy dedicates Brooks Eckerd classroom** The

URI College of Pharmacy has dedicated a classroom with the latest animation technology to Brooks Eckerd Pharmacy. The Warwick-based pharmacy chain has supported several College of Pharmacy projects, with its contribution now exceeding \$100,000. [Brooks Eckerd funded a full renovation of the facility](#), and a Champlin Foundations grant funded the animation equipment and software. Students and faculty use the facility to view animations that depict drug interactions and biological processes at the molecular level. [More...](#)



► **URI experts say babesiosis is on the rise in Rhode Island**

Babesiosis, caused by a malaria-like parasite that infects red blood cells, is on the rise in the state, and it is transmitted by the same ticks that transmit Lyme disease. According to URI entomologist Thomas Mather, about 12 percent of the deer ticks in southern Rhode Island are infected with the babesiosis parasite, while typically 20 percent of the ticks statewide are infected with the bacterium that causes Lyme disease. That means that in some cases, both diseases can be transmitted in one tick bite. It is important to note that the treatment for the two diseases is not the same. [More...](#)



► **Solar roof installed at URI Cooperative Extension Education Center**

The high-tech solar roof installed at the URI Cooperative Extension Education Center on the Kingston Campus will provide renewable energy to the building and demonstrate an exciting new sustainable technology to Rhode Islanders. "The solar roof is going to open up a wide range of new opportunities for outreach and education on campus," said Marion Gold, director of the Center. "It will help us raise awareness of renewable energy in the state, provide educational opportunities for students interested in energy issues, and offer engineering students a chance to get experience working with a unique new technology." [More...](#)



► **Engineering student offered scholarship to study in Germany**

Alison Laferriere is one of 62 undergraduate students from the U.S. and Canada to receive a prestigious scholarship from the German Academic Exchange Service to study in Germany this year. Laferriere is studying electrical engineering and German through the URI International Engineering Program. In Germany, she will take classes for a semester at the Technical University of Braunschweig, followed by a six-month internship at Siemens, one of the world's largest electronics companies. [More...](#)



► **URI student wins prestigious Madison Fellowship**

Marissa Owens '06 has been awarded the prestigious James Madison Graduate Fellowship, which helps aspiring secondary school teachers pursue graduate study in American history. Owens is one of only 50 James Madison Fellows selected in competition with applicants from all 50 states and territories. The fellowship, named after the nation's fourth president,

Chicago Chapter members are heading to Grant Park for the Chicago Outdoor Film Festival. On **September 16**, the **Northern California Chapter** alumni are getting together for their 11th annual clambake in San Mateo, and the **Ohio Chapter** is planning its second annual clambake in Fetzer's Woods to be held on **September 24**. [Find out more.](#)



▶ **Make your plans now for Homecoming 2006**

Come back to Kingston for [Homecoming 2006](#) on **October 14**. There are reunions, the 6th annual Rhody the Ram 5K, the URI-Richmond game, the URI Distinguished Achievement Awards Gala--and more.

will pay Owens' full tuition of \$16,000 to Union College in Schenectady, N.Y., which offers an intensive year-round master of arts in teaching and social studies. [More...](#)



▶ **Hach Scientific Foundation to establish scholarships** Starting in the 2007-2008 academic year, the Hach Scientific Foundation will provide two \$6,000 undergraduate scholarships to future high school chemistry teachers studying at URI. The Colorado-based foundation is dedicated to promoting chemistry education and is extending its outreach support to address the national deficit of content-qualified chemistry teachers. The scholarships, earmarked for students with financial need and academic aptitude, are renewable each year [More...](#)

▶ **On the calendar** The 2006 URI football season begins at UCONN on **August 31**. Take a look at the [game schedule](#). Classes for the fall semester begin on Wednesday, **September 6**. This fall's URI Honors Colloquium, "[Songs of Social Justice: The Rhetoric of Music](#)," begins its weekly series of programs on **September 12**. [More...](#)

SUBSCRIBE ONLINE ▶ [inAdvance](#)
▶ [QUAD ANGLES](#)

▶ [PAST ISSUES](#) of inAdvance



- ▶ [Alumni Homepage](#)
- ▶ [Giving Homepage](#)
- ▶ [Give Online](#)
- ▶ [URI Homepage](#)
- ▶ [Athletic News](#)
- ▶ [URI News](#)
- ▶ [URI Calendar](#)



URI is an equal opportunity employer committed to the principles of affirmative action. URI Division of University Advancement. All rights reserved. URI Alumni Center, 73 Upper College Road, Kingston, RI 02881
Email: eservices@advance.uri.edu

[Privacy Statement](#)



ESUBSCRIPTION MANAGEMENT

To unsubscribe from this list, change your email address, or manage your esubscriptions, go to [Eservices](#). If you prefer, you may also unsubscribe by replying to this email with **UNSUBSCRIBE** in the subject line. To ensure your privacy, Eservices is password protected and requires log in. [Privacy Statement](#)