



## Alumni Updates



► **Is it hot in here?** GSO Dean David Farmer and Associate Dean Kate Moran will lead the [June 2007 Chat](#) on Tuesday,

**June 12 at 1 p.m. EST.** Join them to discuss global warming issues, their own research on the topic, and the documentary *An Inconvenient Truth*. Our **July 24** chat will feature filmmaker Cherry Arnold '87, whose film *Buddy* documents the rise and fall of America's most notorious mayor.



► **Golden Grad Weekend photos** Our 2007 Golden Grad Weekend was held on June 1 and 2. Take a

look at the smiling faces who made this year's Golden Grad event such a special celebration. [Browse our photo album!](#)



► **Family Camp spaces still available** There are still some openings for [Alumni Family Camp](#) to be held **July 27-29**. See

what we have planned and [register](#) soon!



► **Member wine tasting event in Newport** Alumni Association members are invited to a [special event at Newport Vineyards](#) on

**June 15.** The evening will include a private tour of Newport Vineyards, wine and cheese tastings, and browsing the winery's retail shop. For Alumni Association [members](#). \$20 per person. Contact Gina Dei at 401-874-5808 or [gmdai@advance.uri.edu](mailto:gmdai@advance.uri.edu) to register.



► **Show your Rhody pride** Plan to attend this



## University News & Events



► **Anonymous URI alumnus donates \$1 million to honor retired engineering professor** An anonymous donor has provided a \$1 million challenge grant to the University that will match gifts of \$10,000, \$25,000 or \$50,000 and above to establish the [Robert S. Haas Endowed Professorship in Electrical Engineering](#). The gift,

which is part of the Making a Difference capital campaign, honors the professor emeritus of electrical engineering who taught at URI from 1948 to 1988. "When you're teaching, you never know which students you're really having an impact on," said Haas. "It was a complete surprise to hear that one of my former students was making such a generous gift in my honor." [More...](#)



► **Coastal Resources Center helps Tanzania manage risks to watersheds** Population growth and poverty in Tanzania have

increased demand on watersheds and placed the health of Saadani National Park at risk. To help the Tanzanian government manage these issues, the URI Coastal Resources Center was awarded a four-year, \$800,000 grant from the U.S. Agency for International Development and The Coca-Cola Company. The grant is part of the Tanzania Water and Development Alliance, which aims to strengthen government efforts to promote sustainable management of water and watershed resources, improve community access to safe water, and provide sanitation services and hygiene education. [More...](#)



► **URI survey: Farmers' markets increase produce consumption**

In recent years, there has been an effort to increase the number of farmers' markets in the state. While these markets provide additional revenue for local farmers, URI nutrition education outreach staff wanted to know whether they encourage healthier eating habits. Heidi Hetzler, a community nutrition educator working with the Food Stamp Nutrition Education Program at the URI Department of Nutrition and Food Sciences and nutrition students Jennifer Blake and Sarah Flinn conducted a survey of farmers' markets attendees. According to their findings, 36 percent of survey participants reported that their attendance at the markets played a role in increasing their consumption of fruits and vegetables. [More...](#)



► **Birthday presents provide gift of education** Many of us search

to find a perfect gift for a friend's birthday. Longtime friends, M. Beverly Swan, provost and vice president for academic affairs, and Nancy Potter, professor emerita of English, have found a unique way to honor each other each year and help URI students. Each woman donates to the other's endowed scholarship fund. This year, Giselle LaFrance, who graduated in May 2007 with a major in English and a minor in film media, was the recipient of both scholarships. [More...](#)



► **URI hosts annual chemistry contest** The University of Rhode Island chemistry department recently hosted its annual chemistry competition, attracting about 500 Rhode Island high school students.



year's [Pride in URI Night](#) at McCoy Stadium on **August 21**. Cheer on the PawSox as they take on Syracuse, enjoy an all-you-can-eat barbecue, meet players, Rhody the Ram, and Paws at this annual summertime event! Online registration now available!

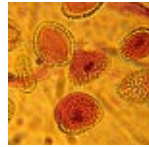
► **At the chapters** The **Ohio Chapter** is planning a barbecue before the Indians-Red Sox game on **July 24**. On **August 4**, **Phi Kappa Psi's** annual Pop Top Open will be held at the Beaver River Golf Club in Richmond, R.I. On **August 23**, the **Chicago Chapter** is heading to U.S. Cellular Field for a White Sox-Red Sox game and an Alumni Association Patio Party before (and after) the game. [Find out more](#) and see what your chapter has planned.



The hour-long, multiple-choice contest covered general chemistry and some organic chemistry. The contest was established in 1921 by Chemistry Professor Joseph Waite Ince. Since 1997, the award of a full, four-year scholarship to URI has been based, in part, on the results of the competition. The 30 highest scoring high school juniors will be invited to take a second exam and the student scoring highest will be offered the scholarship. [More](#)



► **Ways of giving** There are many ways of making a difference to the University of Rhode Island. If you have not already done so, we hope you will consider making a gift before the end of the fiscal year on June 30. Gifts of securities, such as stocks, bonds and mutual funds, can be a tax-advantaged way to support URI because they can be donated without paying any capital gains taxes. Learn more about transferring a [gift of securities](#) to the University.



► **On the calendar** On **June 14**, the URI Feinstein Providence Campus will host a lecture on the [history of immunizations and infectious diseases](#), featuring Stanley Aronson, Brown Medical School dean emeritus, and Andrea Rusnock, URI associate professor of history. The College of Business Administration is honoring [Professor Clay V. Sink](#) on **June 14**. At the [Ryan Center](#): Tickets on sale now for **Vince Gill**, the Friends and Family Tour, featuring Amy Grant and the Del McCoury Band on **July 19**; and two performances of the **Wiggles** on **August 7**. [More...](#)

**SUBSCRIBE** ► [inAdvance](#)  
**ONLINE** ► [QUAD ANGLES](#)

► [PAST ISSUES](#) of inAdvance



► [Alumni Homepage](#) ► [URI Homepage](#)  
► [Giving Homepage](#) ► [Athletic News](#)  
► [Give Online](#) ► [URI News](#)  
► [URI Calendar](#)



URI is an equal opportunity employer committed to the principles of affirmative action. URI Division of University Advancement. All rights reserved. URI Alumni Center, 73 Upper College Road, Kingston, RI 02881  
Email: [eservices@advance.uri.edu](mailto:eservices@advance.uri.edu)

[Privacy Statement](#)



## ESUBSCRIPTION MANAGEMENT

To **unsubscribe from this list**, change your email address, or manage your esubscriptions, go to [Eservices](#). If you prefer, you may also unsubscribe by replying to this email with **UNSUBSCRIBE** in the subject line. To ensure your privacy, Eservices is password protected and requires log in. [Privacy Statement](#)